



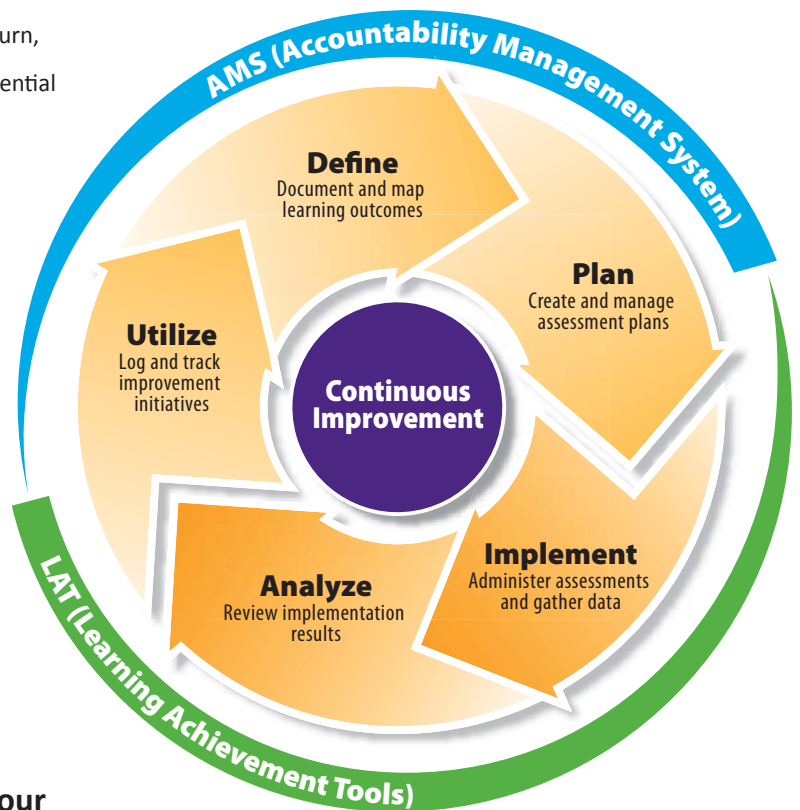
TaskStream
Advancing Educational Excellence

TaskStream's Vision for Advancing Excellence in Education

Colleges and universities can design, document and manage institution-level accountability goals and processes. These goals, in turn, initiate planning activities at the program level where essential skills are defined and student performance outcomes are measured.

When viewed as a whole, the results—documented student achievement, programmatic and institutional initiatives, and community participation—provide powerful new ways to demonstrate effectiveness and manage improvement over time.

When used together, TaskStream's suite of tools for higher education—the [Accountability Management System \(AMS\)](#) and the [Learning Achievement Tools \(LAT\)](#)—maximize learning within your institution.



ACCOUNTABILITY IN HIGHER EDUCATION

True accountability involves identifying, tracking and managing institutional goals or objectives as defined by your institution. At the heart of this process is an internal commitment to continuous improvement which must involve the following:

Demonstrating to all stakeholders that students are learning the skills and knowledge necessary for success.

Engaging the community in discussions and actions to develop a culture of inquiry and transparency across the organization.

Providing evidence that teaching and learning methods are being sustained and improved over time.



ACCOUNTABILITY MANAGEMENT SYSTEM

The **Accountability Management System (AMS)** by TaskStream equips educators with tools to demonstrate institutional effectiveness. AMS is a customizable system that helps facilitate and manage strategic planning and assessment initiatives to strengthen teaching and learning institution-wide.

Streamlined Accreditation

- **Organize the entire planning and reporting process** and eliminate the volumes of disconnected documents that accompany most paper-based systems.
- **Utilize templates and up-to-date accreditation standards** in the system.
- **Enable administrators to share access** to accreditation documents and processes with outside stakeholders.

Efficient Management

- **Seamlessly integrate** previously isolated documents and tasks into a holistic view of the organization's overall performance.
- **Promote uniform data collection** with customized templates and structured prompts.
- **Ensure quality** by reviewing content and providing feedback.

Oversight and Reporting

- **Review real-time activity and examine the status** of all programs and offices participating in assessment and planning activities.
- **Map curricula and analyze alignment** of mission statements, outcomes, institutional goals and accreditation standards.
- **Create custom views** of the content contained in assessment and action plans to target key information of interest.

Faculty Engagement

- **Encourage discussion and facilitate communities of practice** around assessment activities.
- **Provide guidance and resources** by adding detailed, customized instructions to make the process easy to follow and complete.
- **Customize processes to fit the culture of your institution** while ensuring that you are able to collect the information you need.

Continuous Improvement

- **Establish institutional memory** by archiving cyclical data, documentation and discussions in one centralized system.
- **Close the loop on assessment** by documenting recommendations and managing actions to affect change.
- **Support a culture of educational excellence** across the entire campus with rich, real-time data.

The pressures of increased accountability have many educators asking "How can we..."

...demonstrate that our programs are effectively teaching students the knowledge and skills they need?

...show stakeholders (policy makers, parents, students) that their investments are worthwhile?

...satisfy accreditation standards requiring evidence of improved student learning over time?

...engage faculty in a campus-wide conversation about assessment and improvement of learning?

...monitor and strengthen learning outcomes and program effectiveness across our institution?

...effectively manage the process of demonstrating institutional effectiveness and instill a culture of continuous improvement?

What I like about TaskStream is the ability not only to organize and report on a complex array of assessment activities but also to model best practices in assessment for the university community."

- Dr. Carol Kominski
Associate Vice President for Institutional Effectiveness and Research, Texas Woman's University



LEARNING ACHIEVEMENT TOOLS

The Learning Achievement Tools (LAT) by TaskStream facilitates the demonstration and assessment of student performance based on established outcomes and standards. The tools enable customized competency assessment and reporting and offer a wide range of methods to demonstrate learning.

Outcomes Assessment

- **Collect artifact and reflection requirements** according to program or course specifications in the form of text, images, videos and files of all types.
- **Create and use custom rubrics** and form-based assessment instruments to score work and ensure consistent data collection.
- **Attach standards from a comprehensive database** of local, state, national and international standards, outcomes and competencies.

Performance Reporting

- **Aggregate, analyze and present assessment results** to examine individual, programmatic and institutional success.
- **Create electronic exhibit rooms to share data online** and export reports to Excel for further analysis.
- **Examine inter-rater reliability** with reports that display scores from multiple evaluators side-by-side and include agreement and correlation calculations.

E-Portfolios

- **Provide opportunities to demonstrate knowledge and reflect** on personal development.
- **Share work and solicit feedback** – publish to the Web, password protect, export to PDF and download portfolios.
- **Archive digital collections of resources** to organize files, links and media.

Field Placement and Internship Management

- **Maintain custom databases** of information about field sites, staff and individual student or candidate placements.
- **Report on demographics** of placement sites and track placements for individual students.

Surveys

- **Create custom surveys** to poll current students and faculty, alumni, employers and other external stakeholders.
- **Analyze responses** with graphical reports, compare responses over time and drill down to see individual responses.

We have found a world-class technology partner in TaskStream. Their integrated web-based solutions are flexible and dependable, and the company's service is unmatched."

- Joan Lesovitz
Director, Instructional Technologies, Villanova University

Students have to be able to share and show their ability to master competencies. Just putting out scores and objective test data is not enough. They have to really be able to demonstrate their abilities and portfolios are a great way to do that. TaskStream is a robust environment for us. We are a big user, and they work with us to understand what our requirements are and they help us maximize the use of the tool."

- Janet W. Schnitz, Ed.D.
Associate Provost, Assessment; Western Governors University

World-Class Technology

Reliable. Offering a full availability uptime of 99.9% and triple redundant backups, TaskStream's track record of providing superior, secure infrastructure is unparalleled.

Secure. Adhering to strict security protocols, we ensure that your data is safe from tampering and data loss at all times.

Accessible. Our tools are designed to comply with Federal Section 508 guidelines, Bobby, and W3C WCAG recommendations.

Scalable. Built on a two-tiered architecture with advanced application servers, our tools support organizations of all sizes, including some of the world's largest educational providers.

Flexible. Every campus and classroom requires unique solutions. Needs change over time. We partner with our customers to deliver appropriate solutions at any level—for the institution, program and/or classroom—at any time.

Interoperable. APIs and data exchange capabilities enable seamless integration with other systems on campus.

Setting the Standard in Client Support

Support is critical to any successful process management and technology implementation, which is why we provide unlimited, high-quality implementation consulting, online training and ongoing support to all users at no additional charge.

Our level of immediate and continuous support is simply unparalleled. Our experienced Mentoring Services team works directly with all of our clients to ensure a successful implementation.

Client-Focused Solutions

- Manage organization-wide **processes**
- Use outcomes-based assessment data to **demonstrate effectiveness** and **affect change**
- Utilize **e-portfolios** for learning and for the assessment of learning
- Systematically address **accreditation** and certification requirements
- Collect and analyze evidence-based **assessment data**
- Document, measure and track **strategic planning** initiatives
- Demonstrate and assess **21st Century Skills**
- Plan instruction and assessment that address **accountability standards**
- Manage **field placements, internships** and other remote educational experiences

TaskStream provides the highest quality web-based software and supporting services to efficiently plan and manage assessment processes, facilitate the demonstration of learning achievement and foster continuous improvement.

